

## SYMPHONY PARTNER PROGRAM

# Building the future of work together

Symphony enables secure and compliant communications through its markets' infrastructure technology platform, where solutions are built or integrated to standardize, automate and innovate financial services workflows. By integrating communication workflows, we help individuals, teams and partners to improve collaboration, increase productivity and maintain regulatory compliance.

## Modernizing enterprise workflow

Symphony enables users to be more productive by transforming how they connect and collaborate.

Built to meet the needs of financial services and other regulated industries, Symphony's platform offers sophisticated security and enables compliance capability necessary for enterprise, government and businesses of all sizes.

## A cloud platform with superior value

Symphony's advanced cloud infrastructure provides:

- A powerful and flexible workspace collaboration platform for faster workflows
- A trusted community of users worldwide
- The ability to identify critical information in conversations through Signals, Hashtags and Cashtags
- A customizable platform for the evolving needs of clients and application vendors

## Global reach

Symphony's global service and worldwide reach is enhanced by our offices around the world:



## Trusted by the largest financial companies

The world's top financial services firms depend on Symphony to connect their communities and customers. We are backed by some of the world's largest financial institutions, including:



## Symphony Partner Program

Symphony believes that users should have access to best-of-breed applications for communicating and are not locked-in to proprietary structures and closed environments. Yet true flexibility only comes from an organic ecosystem of innovative companies, developing their own applications for collaborating.

We bring this vision to life with our Symphony Partner Program.

### Customers benefit from:

- Unbundled access to best-of-breed applications, content and tools
- Customized workflows to better meet client needs
- Ability to integrate clients' processes into existing, third-party enterprise software to create proprietary apps
- Functionality to create Bots to automate communication processes

### Symphony partner benefits

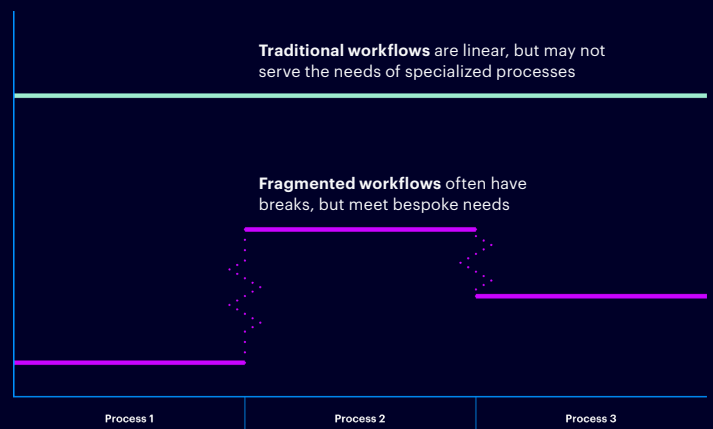
At Symphony, we support our platform partners with a set of standardized integrations to build on Symphony, marketing and sales customized training.

Our objective is to enable all of our partners a successful "go-to-market" campaign and truly collaborate as a joint venture.

As our number of partners continues to increase, the value of the Symphony ecosystem grows exponentially.

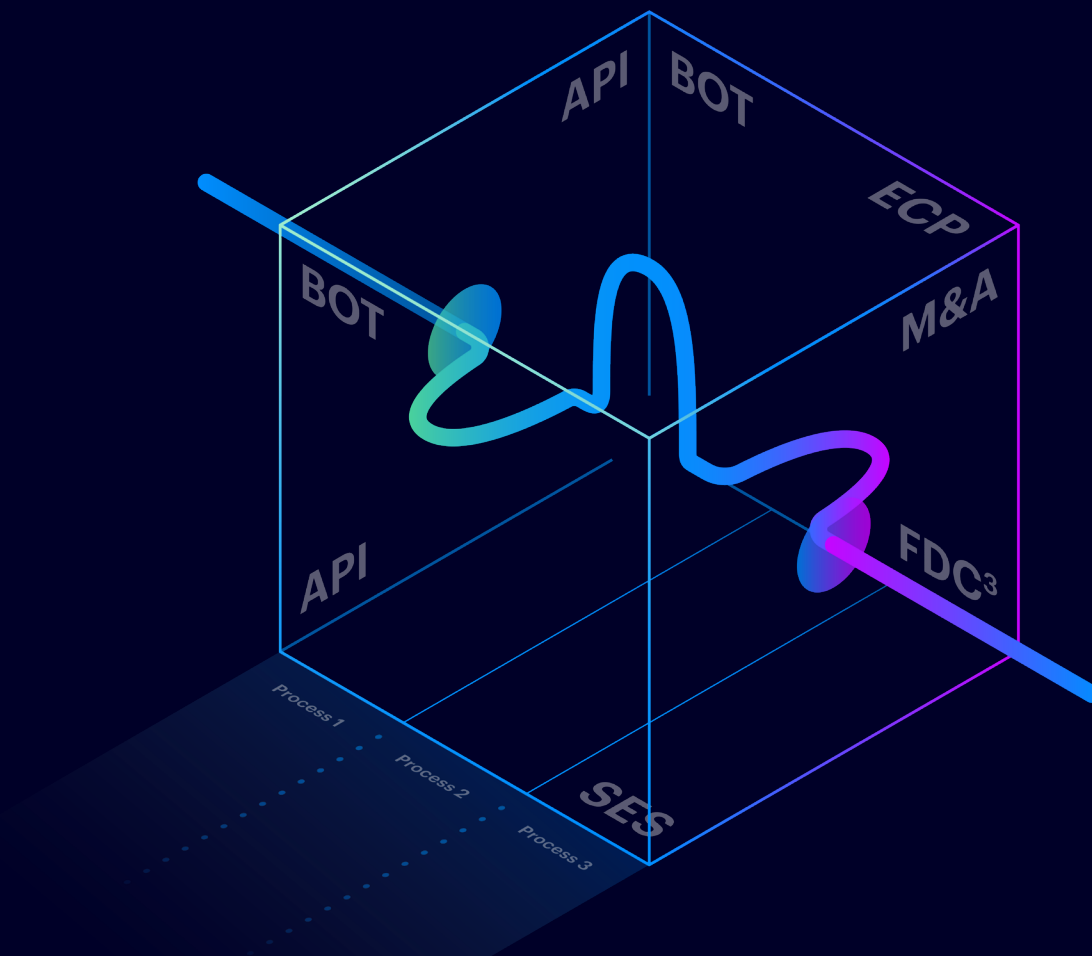
## WORKFLOW EVOLUTION

Similar to technology, financial workflows have changed over time, starting as linear constructs and evolving to specialized platform solutions—both present challenges for multi-faceted processes.



## Symphony integration framework

Symphony offers a programmable, easy-to-use framework that enables rapid development. The framework is built on widely-used industry standards, enabling developers to easily leverage their preferred tools.



### THE COMMON CONNECTOR

Financial Services firms and their systems, processes and workflows are multidimensional and complex—Symphony is the common connector, a flexible solution that creates a seamless workflow.

Symphony flexibly connects Financial Services workflows internally and externally, across systems and applications.

## REST API

The REST API extends the Symphony experience to our partners' software solutions.

With programmatic access to Symphony, our partners can build bots or application integrations for workflow automation and content distribution. These are made available to both individuals and groups, all while remaining secure and compliant.

Use cases include:

- Sending and receiving of messages
- Notification of completed tasks
- Sharing reports

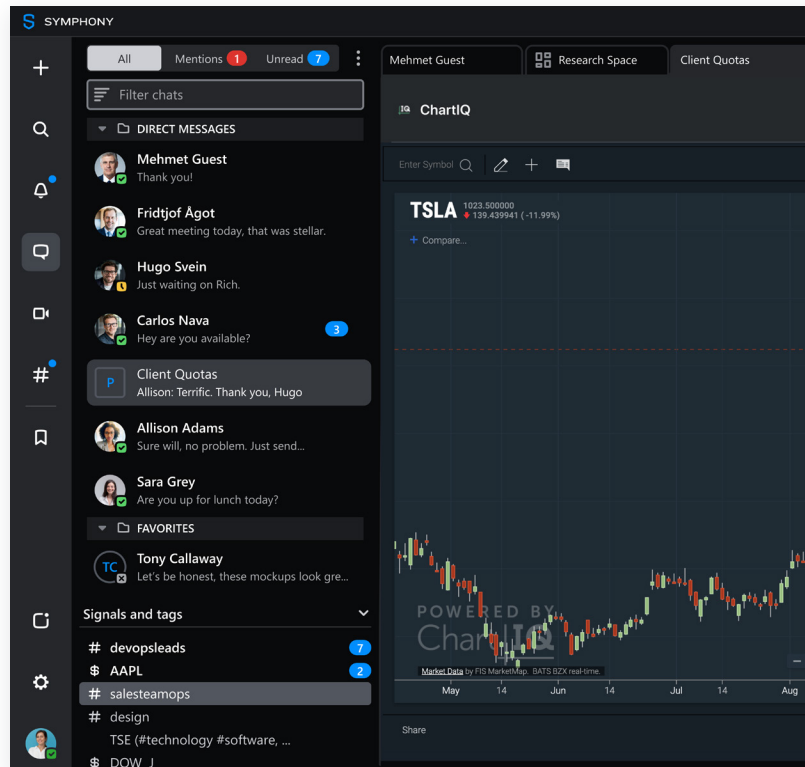
## Extension API

The Extension API helps partners enrich the Symphony experience by embedding apps or modules directly within the Symphony user interface.

Our partners empower users through:

- A visually-rich experience
- Market data and analytics
- Two-way data flow from EXT apps to chat rooms

The REST and Extension APIs are not constrained by any operating system or environment. Developers build these applications using a Symphony BDk in Java or Python, as well as our new WDK in Java.

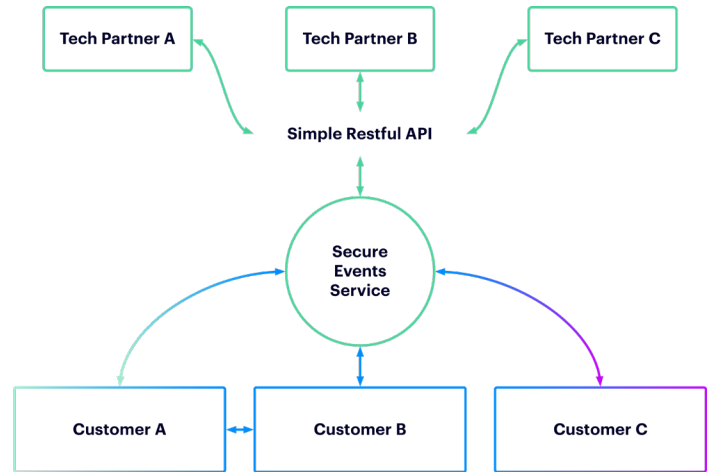


## Secure Event Service (SES)

- Our service is hosted and cloud-based, which means you simply log-in
- This reduces integration complexity with third parties
- SES enables scalable, encrypted, customer-partner interaction

Through SES, our partners can:

- Launch targeted Symphony chat rooms with contextual naming/settings
- Invite relevant parties to jointly collaborate
- Enable discussion material to be programmatically published into the chat room



## Embedded Collaboration Platform (ECP)

Lightweight integration empowers Symphony clients in our partner platforms.

This leads to better collaboration such as:

- Reduced context-switching
- Improved workflow efficiency
- Leverage Symphony as the secure layer in partner ecosystems



## Desktop connectivity

FDC3 is an open-standard for integration when desktop real estate is a challenge.

Symphony's FDC3 implementations allow you to:

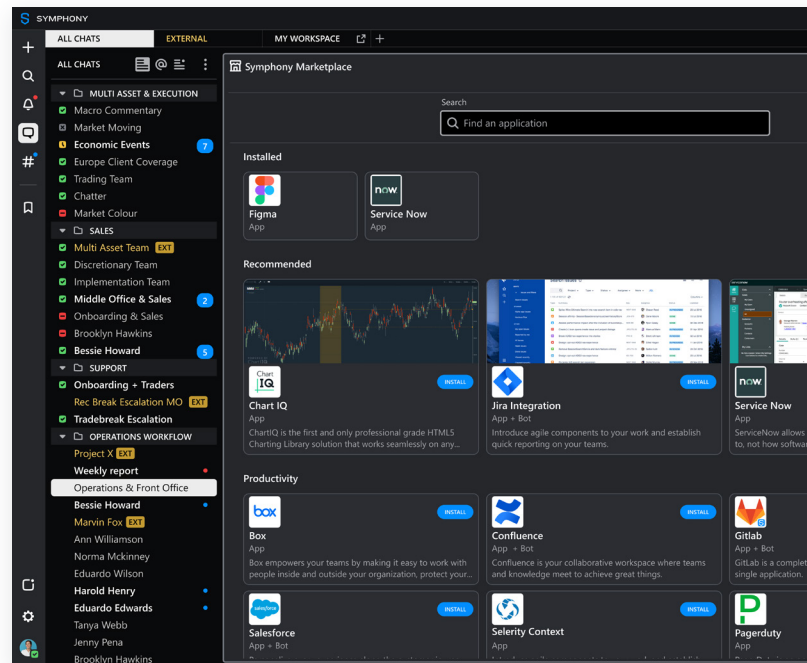
- Lower development costs and reduce time to market
- Enhance client and bot extensions through APIs for 3rd-party development
- Accommodate both server side and desktop APIs

## Promoting our partnerships

### Your digital catalog

Symphony Marketplace is a digital catalog of Applications, Bots and Integrations available on the Symphony platform.

- Symphony users access the Marketplace through the Navigation bar
- By simply clicking on any integration, a description card will appear
- The "I'm Interested" button allows you to ask a question about the integration, connectivity or any other implementation details



To find out more about our partnership offerings or to become a partner with Symphony, visit [www.symphony.com/partners](https://www.symphony.com/partners) or contact us at [partners@symphony.com](mailto:partners@symphony.com).



Neither Symphony Communication Services, LLC (together with its affiliates, “Symphony”) nor the services which Symphony offers to its customers (“Symphony Services”) is subject to the oversight or jurisdiction of any financial regulatory body.

Symphony is not, and shall not be construed as, a registered broker-dealer, an underwriter of securities, an introducing broker, or an entity performing similar or other regulated functions. Similarly, Symphony is not registered as, or to be construed as, a multilateral facility (including but not limited to a SEF, MTF or OTF), trading venue, regulated market or exchange. Because Symphony does not act in these capacities, nor is Symphony registered to do so, any indication to the contrary in this document or in any other document provided to you by Symphony shall be interpreted to the maximum extent so as not to imply that Symphony is acting in such capacity (or in any other capacity that is subject to regulatory oversight or subject to a requirement to register with a financial regulator).

Any Symphony Service that permits customers to negotiate the terms of any financial instrument is offered, and only capable of being used, on a purely bilateral basis. Symphony has no role or involvement in the negotiation or arranging of any transactions in financial instruments nor in the introduction of counterparties to one another for purposes of entering into such transactions. The execution of any such transaction is solely as between the counterparties thereto, and Symphony does not perform any execution, clearing or settlement function for any financial instrument transaction. To the extent that any Symphony customer utilizes Symphony Services for purposes of negotiating financial instruments, it is solely the responsibility of such customer to comply with any regulatory requirements to which such customer, or such negotiation, may be subject.

Neither this document, nor the offering by Symphony, or use by any Symphony customer, of any Symphony Service, shall be construed as a solicitation, endorsement, offer or recommendation by Symphony to buy, sell or hold any financial instrument, or an offer to provide any investment advice or investment services to any person in any jurisdiction. Recipients of this document and users of all Symphony Services alone assume the responsibility of evaluating the merits and the risks associated with the use of the Symphony Services.

Furthermore, certain of the statements and terms contained in this document may be forward-looking and contain concepts, product ideas or functionalities that are not currently part of the Symphony Service suite, but are instead contemplated by Symphony to be offered to customers at a future date. There is no guarantee that any such functionality will be offered by Symphony, and until such time, if any, as a particular functionality is included in the Symphony Services pursuant to a contractual agreement between Symphony and the customer utilizing such functionality, the depiction of such concepts, ideas and functionalities shall be construed as forward-looking only.

Nothing in this document or in the license or operation of any Symphony Service constitutes a representation by Symphony that is contrary to the foregoing disclaimers.